

Asset Vision Platform

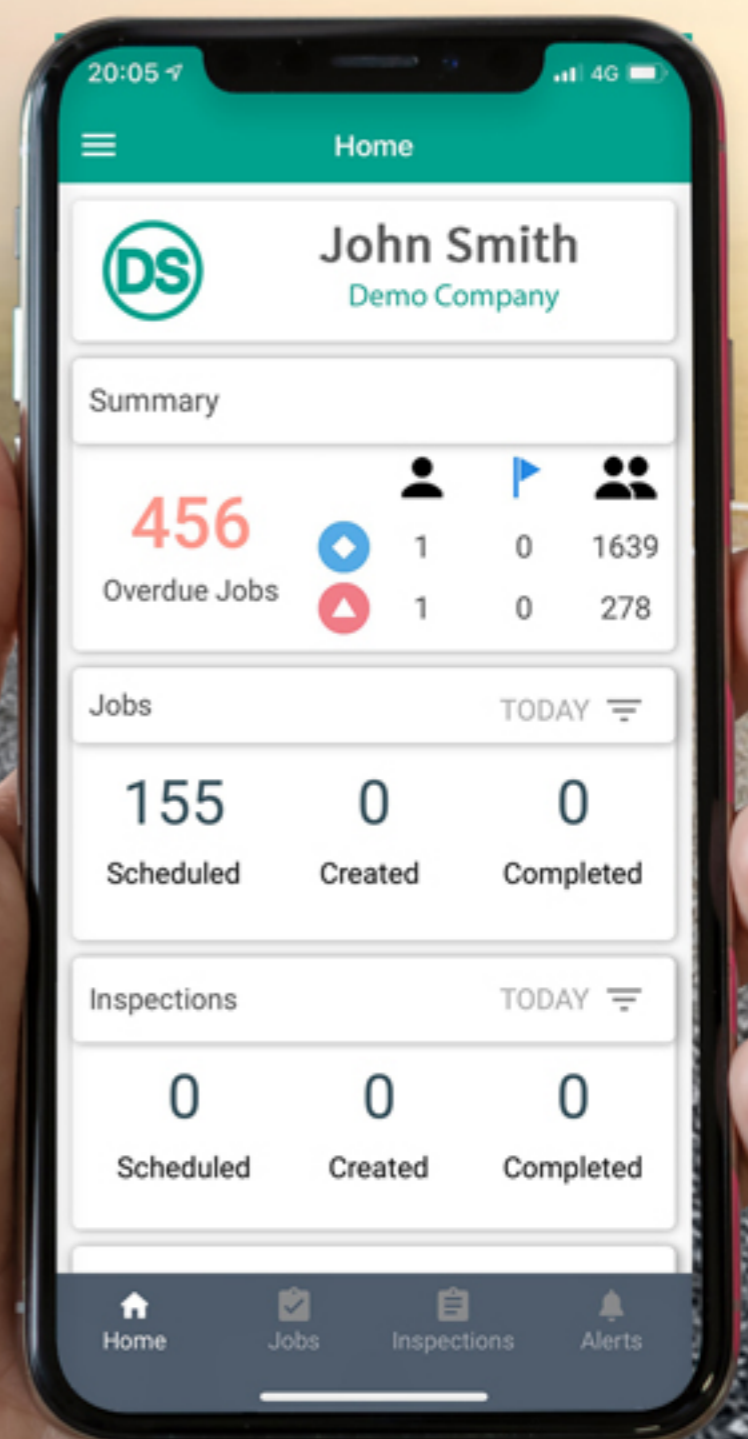
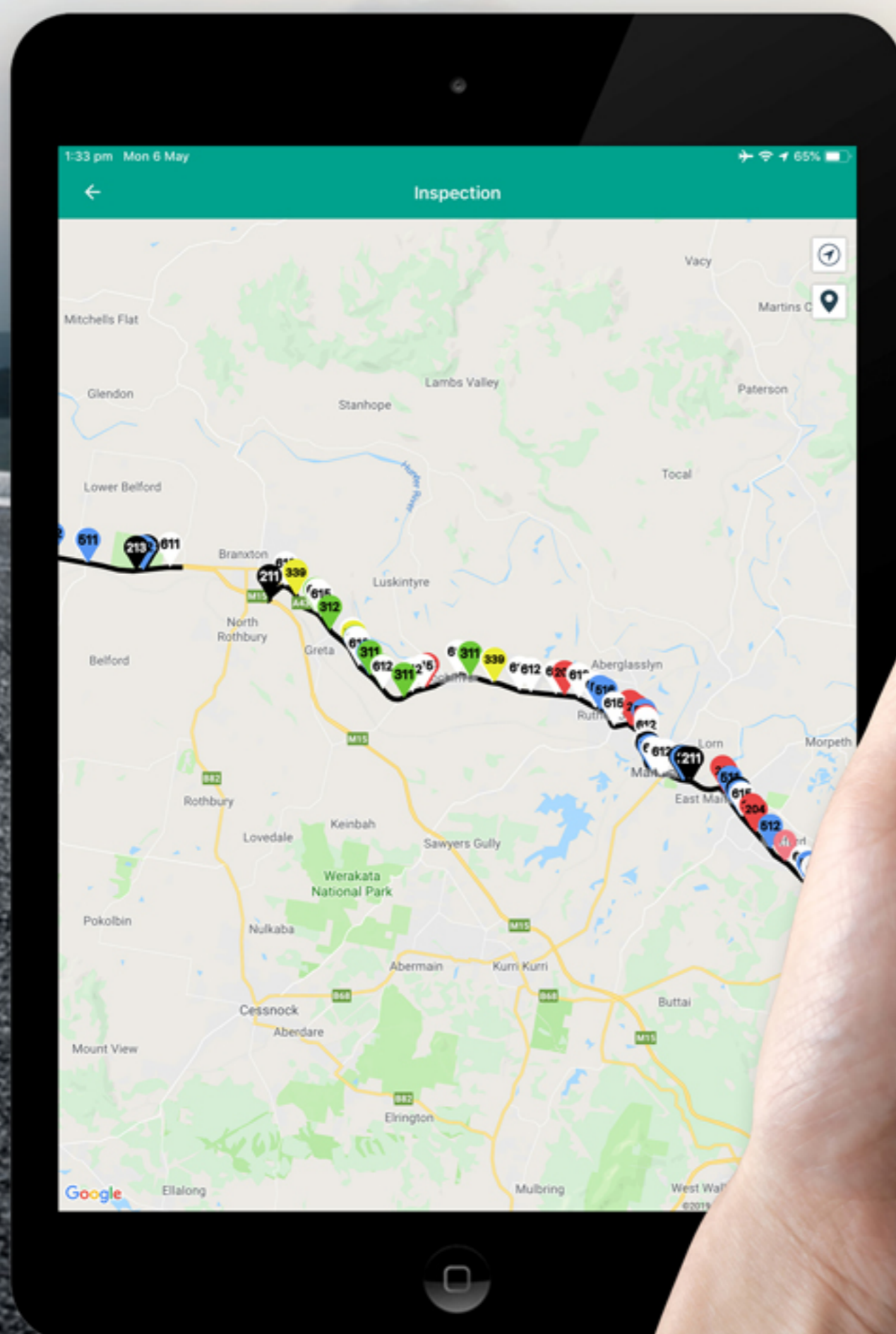
Major Improvements and Highlights

.....

Generation 7

Asset Vision is now available on both iOS and Android

Download the Asset Vision app from the App Store
or Google Play for your smartphone or tablet



Inspections

Inspections can now be scheduled in advance, with field users able to see their upcoming inspection scheduled on their dashboard.

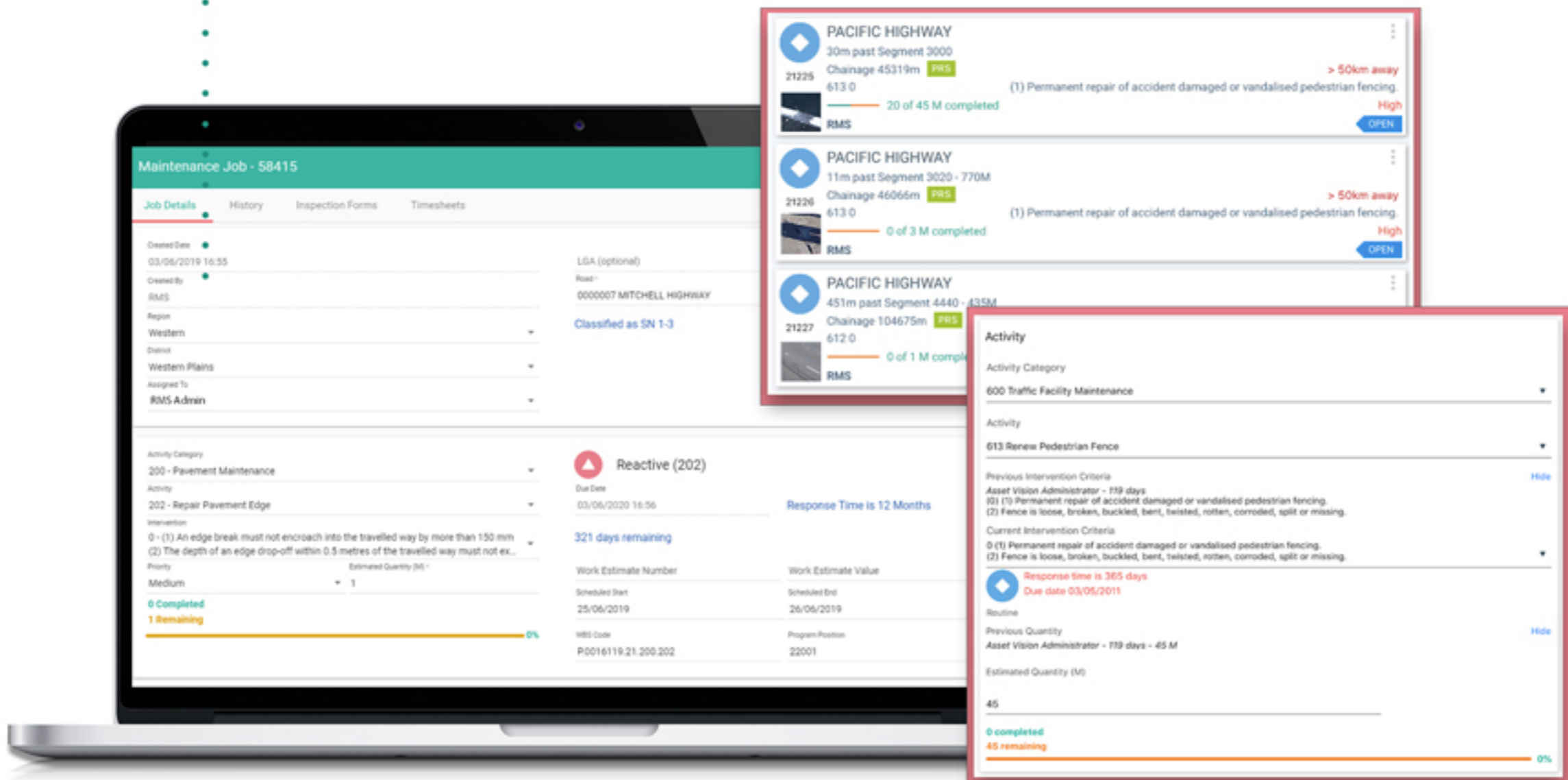
The image shows a laptop screen displaying the 'New Road Inspection' form and a mobile app view. The form is titled 'New Road Inspection' and has a 'Inspection Details' section. It includes fields for 'Created By' (John Smith), 'Assigned User' (John Smith), and radio buttons for 'Completed' and 'Scheduled' (selected). There are also radio buttons for 'Single' and 'Recurring' (selected). The 'Repeat every' field is set to '1' and the 'Repeat On' field shows days of the week (S, M, T, W, T, F, S). There are checkboxes for 'Include Public Holidays' and 'Include Weekends for postponed inspections'. The 'Recurrence Start Date' is '01/07/2019' and the 'Recurrence End Date' is '31/08/2019'. A summary line states 'Every week on Monday, Wednesday & Friday from 1 Jul 2019 until 31 Aug 2019' and '27 Inspections will be scheduled'. The form also has a 'Comments' section and a 'Road' section with a dropdown for '2510 PRINCES HWY EAST - 1'. There are checkboxes for 'Entire Length' and 'Both Directions'. A list of inspection points is shown at the bottom, including '7029 RAMP FROM OLD SALE RD TO PRINCES HWY', '7030 RAMP FROM DROUN WARRAGUL RD TO PRINCES HWY', '7034 RAMP FROM KORUMBURRA WARRAGUL RD TO PRINCES HWY', '7170 RAMP FROM PRINCES HWY TO OLD SALE RD', and '7171 RAMP FROM PRINCES HWY TO DROUN WARRAGUL RD'. The mobile app view shows a map of the area around Narre Warren North, with a red line indicating the inspection route and several purple location markers. The app title is 'Inspection' and the location is 'STATE (MONASH) HWY 19m from Frawley Rd (SR)'.

Field users can now see their location along the road asset they are inspecting in real time, the extent of the inspection, as well as any existing jobs that are still open.

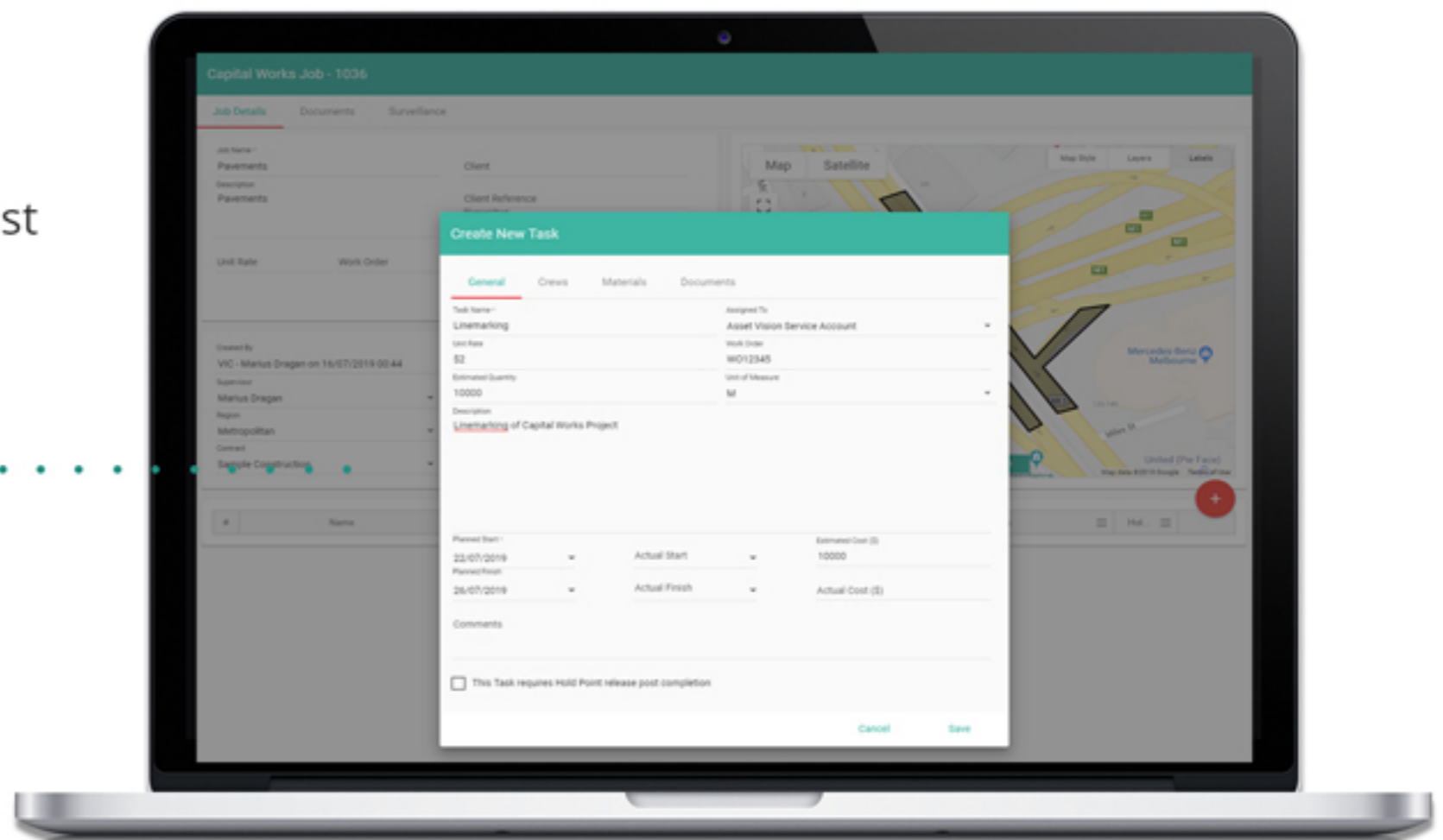
Inspections now integrates into our new Timesheets module, so the inspector's time and related effort can be captured during and upon completion of an inspection.

Maintenance Jobs

Maintenance Jobs can be updated with an actual quantity while in progress, with users now able to see Estimated, Actual and Remaining quantity.



We've added support for job cost codes, unit rates and other references to assist with Job Costing requirements.

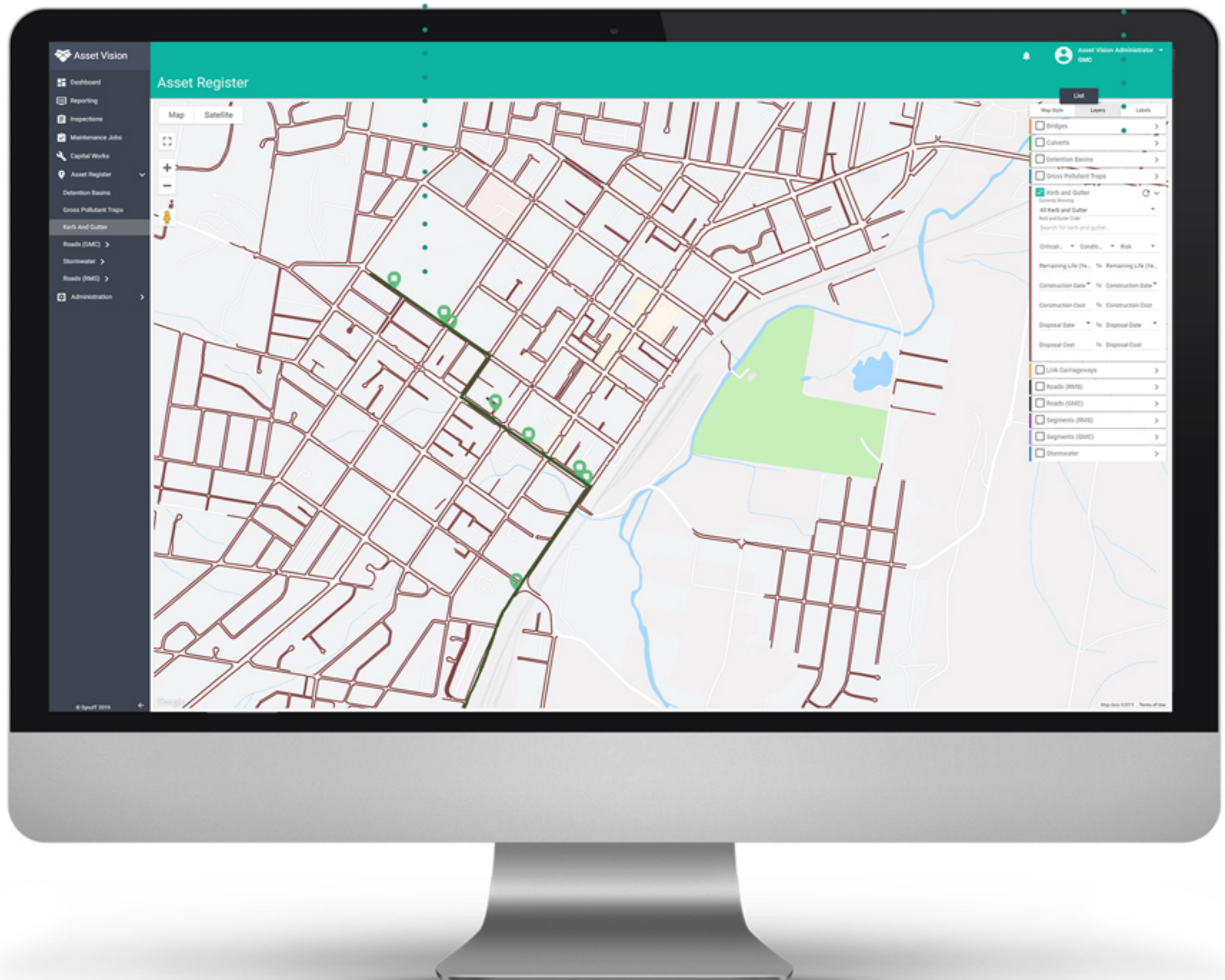


We've migrated the Hours and Minutes that have historically been saved against the job upon completion into our new Timesheets module, which can accumulate time and quantity throughout the duration of the job, with support for additional items such as Team effort, and Travel Time.

Capital Works

Capital Works can be “drawn” as a point, line or polygon by the user, and not linked to an underlying asset if required. Area can be automatically calculated from polygon drawings.

Capital Work Tasks can be linked to a standard set of Activities, each with their own Unit of Measure.



Track Estimated vs Actual Costs of Capital Work projects.



Capital Work is now integrated into our new Timesheets module, with support for items such as Team effort, and Travel Time.

Timesheets

Our new Timesheets module provides configurable timesheets for teams to capture work effort.

Links to work order numbers and/or cost codes to provide Team Costing analysis.

Edit Timesheet

Timesheet Date: 08/03/2019 | User: Asset Vision

Shift Code: Day Rate

	People	Hours	Minutes
Crew Time	5	X 2	30
Sub Contractor	3	X 2	30
Quantity (M2)	51		
Skill Hire Time	People	X Hours	Minutes
Second UOM Quantity	Quantity		

Comments: [Text Area]

Buttons: Save, Cancel

Links to Maintenance Jobs to allow the user to capture actual quantity updates until the job has been completed.

Automatically prompt your field users to fill out Timesheets upon progress updates or completion of Maintenance Jobs, Capital Work Tasks and Inspections.

Create Timesheet

Shift Code: Day Rate

	People	Hours	Minutes	Day
Crew Time	3	x 3		3:00
Skill Hire Time	2	x 3		3:00
Sub Contractor		x		0:00
Quantity	10		M2	
Second UOM Quantity	5			

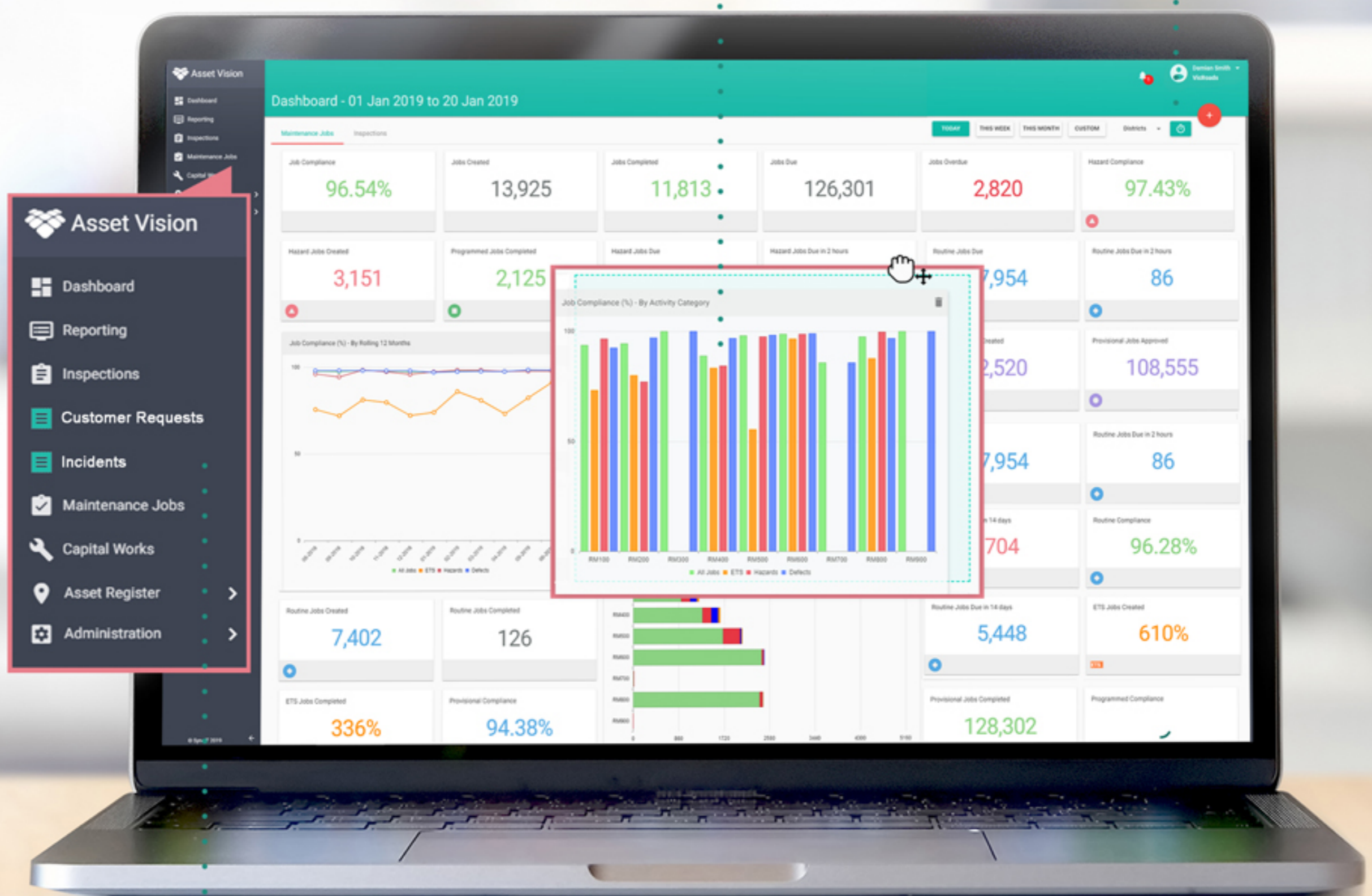
Comments: Repaired Wire Rope damage

Buttons: CANCEL, CONFIRM

Dashboard

Customisable widgets, can be added/removed and dragged to suit the needs of individual user. Your dashboard layout is automatically saved for next time.

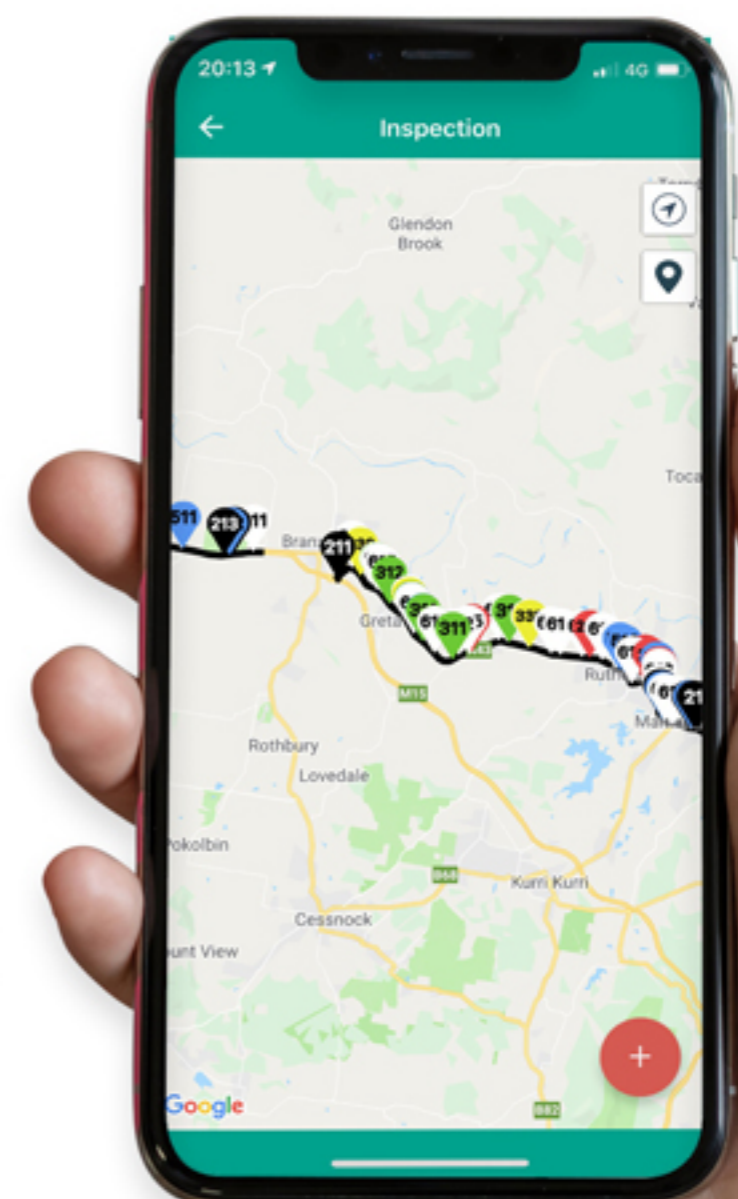
The dashboard can be set to automatically refresh every few minutes; perfect for dedicated monitors or TV's.



Configure additional modules for other business processes to centralise data capture and reporting.

Other

- ✓ Maintenance Job locations now provide a more accurate location, can be unlocked from road centreline, as well as dragged and moved manually.
- ✓ Bulk select and Export Jobs, Capital Work, Inspections and Asset Register to Excel.
- ✓ Maintenance Jobs can be Re-Opened and assigned back to Contractors after being Completed.
- ✓ Administrators can now Edit Completed Maintenance Jobs to make corrections.
- ✓ Added an Excel Report for Capital Works.
- ✓ When inspecting a road and associated ramps, the ramps will now show on the map alongside the road being inspected.
- ✓ Preferred Roads in Areas of Operation is now Preferred Assets, to control visibility of other top-level asset types.
- ✓ Upgraded User Administration and User Profile and Permission Group areas on the web portal.
- ✓ Added a Forgot Password function for users to reset their own passwords
- ✓ Improved support for Permissions between Organisations.
- ✓ Added an Import facility for Maintenance Jobs.
- ✓ Administrators can now clear Device Licenses from User accounts if required.
- ✓ Improvements to Maintenance Job, Capital Work and Inspection loading times on the web.
- ✓ We can develop Custom Reports as required, and integrate them into the Reporting area.
- ✓ Asset Register now supports more spatial types (added Polygon and Multi Line String).
- ✓ Added Asset Type specific Permissions, putting in place control over user groups being able to edit only specific Asset Types in the Asset Register.
- ✓ Miscellaneous bug fixes and other improvements throughout web and mobile application.





.....

SyncIT Development Pty Ltd

Suite 4, 799 Springvale Road
Mulgrave VIC 3170
(03) 9566 7600
www.assetvision.com.au
contact@assetvision.com.au

